



The GoldFax Advantage

An Enterprise Solution at a Small Business Price

Benefits

Convenience

You never have to leave your desktop environment to stand in line at a fax machine again.

Increase Security and Privacy

Don't worry about confidential work documents sitting on the fax machine.

Improve Customer Service

Connect up to production environments and speed customer services, workflows.

Compliance and Auditing

Archive and easily access faxed documents and history to be more accountable to industry regulations and corporate policies.

Confidence

Don't worry that the fax machine failed or ran out of paper before the document was sent completely.

Fast ROI

Our customers realize immediate savings from eliminating fax telephone line charges, employee time, printer and fax toner, paper and maintenance.

Client Ease-of-Use

No learning curve for end users. If they know how to print, they can fax via GoldFax.

*GoldFax is the most efficient, most flexible and best value business fax solution in the market. The architecture, performance and features are robust enough for large enterprises such as **Daimler-Chrysler**, yet affordable and flexible enough for your small business.*

Gain Competitive Advantages Over Using Fax Machines

Still faxing the Old-Fashioned way? If your employees are still sending faxes by printing them out, walking over to a fax machine and standing there until it's done connecting and sending, then you should know there is a much more efficient, cost-effective and secure way to fax.

GoldFax Advantage: Convenient Desktop Faxing

GoldFax is a server-based software product that allows you to send faxes directly from email, Microsoft Word, or any other application. You no longer have to print out documents, lose quality, security, privacy and tracking and stand in front of the fax machine.

From within any application, you simply select the GoldFax "printer" just as you normally do for printing, enter a fax number of select a contact to send to and the fax will be sent behind the scenes. GoldFax seamlessly adds the power of digital faxing to your company with nothing new to learn or software to install.

GoldFax Advantage: Receive Faxes into Your Email

GoldFax can put received faxes into a general mailbox or directly into your email Inbox. You get the highest quality documents, easily forwarded, stored, accepted into document



management systems, total security, privacy and tracking without standing in front of the fax machine. You don't have to worry that your inbound confidential documents are sitting on your fax machine for anybody to read.

Get the **GoldFax Advantage** and gain immediate value throughout your organization by changing the way your company faxes:

Manage inbound faxes online to improve security and organization

Improve Customer Service and responsiveness to suppliers, customers, regional offices, etc.

Eliminate lost faxes, such as purchase orders and legal documents

Get more out of your Accounting and ERP systems with integrated Production Faxing

GoldFax Advantage: Reduce Costs, Increase Productivity

Save the amount of time your employees spend in front of printers and fax machines, reduce the cost of toner, paper and phone line charges, and know that all pages are sent or received by the intended recipient.

Why is GoldFax the Best Choice?

GoldFax is one of the most well-respected fax solutions on the market. It has a very robust feature set, is highly scalable for large enterprise customers, and is backed up an organization that provides excellent one to one support for your small business. Every day more organizations switch to GoldFax for these reasons:

GoldFax Advantage: Simplicity

GoldFax is built to be easily installed, deployed and used. Our technology is advanced, yet the installation process is quick and easy. Deployment is easy because there is no client software to install or maintain on every users' desk. GoldFax is very easy for your users to understand and requires no training or no new commands. GoldFax is transparent to everyone since all they do is select a GoldFax "printer" from the print window.

Many of our competitors have complex products to install, deploy and use, and often requires consultant's days of additional installation time.

GoldFax Advantage: Support

Our GoldFax product has been on the market for over a decade, and our Customer Care team each have more than ten years experience supporting GoldFax. We know faxing and we take the extra steps to help you solve your business challenges. Our Customer Care Team has often been complimented for going above and beyond the call of duty. GoldFax support includes: email, telephone, WebEx-based support and Remote Training.

GoldFax Advantage: Architecture

Our company, DPD International, has been developing high-performance, low-overhead mainframe and mid-range applications for an unmatched 30 years. GoldFax was designed for high-demand faxing applications with low-system overhead by using a single send/receive service and multi-threaded architecture. GoldFax remains in a "sleep" state until a fax document is received or sent. It has a high-performance rendering engine at the server level for user efficiency and fast processing. Our software has consistently out-performed other fax server software in high-volume applications.

We allow you flexibility in several ways. For example, we support many older versions of the Microsoft Operating system, currently back to version 3.x. Also, GoldFax supports high-performance fax boards, as well as provides flexibility by supporting low-cost fax modems.

GoldFax Advantage: Production Module

By using the GoldFax Production Module, your faxing can seamlessly integrate to existing file and mail servers, hosts, ERP, legacy or CRM systems to automate the electronic delivery of documents such as purchase orders, invoices, and loan applications. GoldFax easily integrates with SAP, Oracle, PeopleSoft and virtually any other business applications. Because GoldFax integrates faxing with existing routines and workflow in your business, it leverages your investment in your back office applications, and gives you a powerful and cost-effective business system.

GoldFax Advantage: Citrix, OpenVMS, Windows Terminal Services, Unix, Linux

Citrix and Windows Terminal Services Faxing:

GoldFax is unique in the industry by allowing faxing from thin client workstations, Windows Terminal Services, or Citrix MetaFrame, with only a single copy of the GoldFax Client software installed per server.

OpenVMS, UNIX and Linux Support: GoldFax interprets HP PCL print images and ASCII text regardless of where they originate. This allows UNIX, Linux, OpenVMS, mainframe and other systems to submit single or batch fax jobs directly to the GoldFax print service.

GoldFax Advantage: Total Cost of Ownership

Unlike some of our competitors, GoldFax allows you to run your network faxing system effectively. It does not force you to spend extra money on a dedicated high-end server or require high-paid consultants to install and manage it. GoldFax can run on your existing computers, it can run using an older version of the operating system so you don't have to upgrade, and you can install the software yourself.

GoldFax Advantage: Fast ROI

GoldFax provides a quick return on investment because the cost is quickly recovered by a reduction in toner, paper, man-hours, fax machine maintenance, and new machine purchases. Your employees will have more time to spend with customers.

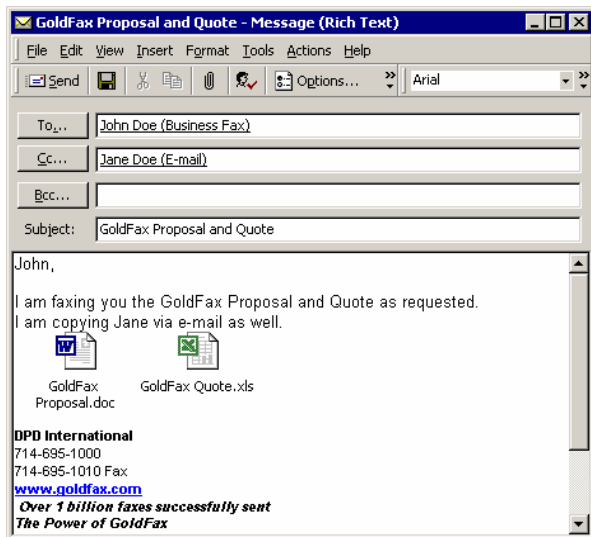
Don't make the mistake of postponing your decision to purchase GoldFax. You are missing out big savings and improvements by keeping all your fax machines and forcing everyone to wait around to send or receive a fax.

Advanced GoldFax Sending Features

Fax From any application: Anything you can print, you can fax from any Windows desktop application. When the GoldFax print option is selected, you can enter cover page information, select recipient names and distribution lists, or enter ad-hoc fax numbers.



From Microsoft Outlook & Exchange: You can fax email messages and attachments by selecting a person from a Contact list, Exchange Personal Address Book or Global Address Book, or by entering a new number. Email and attachments can be sent to both email and fax recipients simultaneously.



From POP3/SMTP Email you can enter fax numbers as email addresses and store them in your email address books, so each new address only needs to be entered one time.

From The GoldFax Client: You can also create fax messages using the built-in rich text editor, or you can drag a document from the desktop onto the editor. Personal and system-wide fax phonebooks can store frequently used numbers, and distribution lists can be used for broadcast faxes.

GoldFax Client ODBC Links: The GoldFax client interface allows dynamic links to contact information in any ODBC database, such as Oracle, SQL Server or Access databases. Records are mapped just once, without needing to create and synchronize additional phonebooks, thus minimizing maintenance issues. The GoldFax client will also link to Outlook Contact lists without requiring you to open the Contact lists.

From Data Processing Applications: GoldFax printers can be accessed directly from your data processing applications. Fax numbers and cover page information are specified using GoldFax Keywords that are included in the output file. Application output can be over-laid on a graphical image, just like printing on a pre-printed form. Here is a sample of GoldFax Keywords used in an output file:

```
@>>TO=|John Doe|
@>>COMPANY=|DPD International|
@>>DIAL=|714-695-1010|
@>>FROM=|Jane Customer|
@>>PHONENUMBER=|714-555-1212|
@>>SUBJECT=|GoldFax Purchase Order|
```

-----page break-----
Your application software output information follows here.

Anywhere Faxing From Browser: You can send faxes from anywhere in the world with the GoldFax web browser interface. Attachments are supported, and a web browser is the only client software needed. Every employee can have fax access from any location.

Internet Faxing: Due to its unique architecture, GoldFax can route faxes between GoldFax servers connected over the Internet using PPTP. This feature provides a distributed fax solution that eliminates long distance charges for sent faxes.

Broadcast Faxing: GoldFax is ideal if you want to send high-volume, automated fax broadcasts to your customers or employees. The GoldFax Production Module and ODBC database lookup functions simplify the implementation of specialized faxing applications, while the large number of lines per server and the efficient, multi-threaded architecture of GoldFax support the performance levels necessary for high-volume fax operations.

Custom Cover Pages: You can create custom cover pages easily. Each user can have his own default cover page for one-page and multiple-page faxes, and you can place graphics or watermarks anywhere on the cover page to maintain branding.

Advanced GoldFax Receiving Features

Faxes as Attachments in Email: You can now receive faxes automatically into your Inbox (GoldFax, Outlook, Exchange, POP3/SMTP, or Lotus Notes) using DID, DNIS, DTMF, ISDN, or CSID. Routing is based on assigned telephone numbers.

Fax Route to Printer: You can alternatively have all incoming faxes routed to a printer queue as they arrive.

Automatic Routing: Caller Station ID (CSID) lets you route faxes based on the originating phone number. This is an easy way to route faxes from a key client or supplier.

Visual Routing allows designated fax coordinators to view the first page of a fax and route it online to the Inbox of the appropriate person.

Fax Viewer: The GoldFax viewer displays received faxes where you can mark them up in full color, draw on them or create overlaid stamps on top of faxed documents. Faxes can be scaled, rotated, and automatically sized either vertically or horizontally within the viewing window. Faxes can be emailed to other users with a MAPI compliant email package.

GoldFax Production Module: This gives you the power to develop custom interfaces to your applications to allow automated or broadcast faxing from any Windows, mainframe, or mid-range system. You can use GoldFax Keywords to create fax workflows directly from legacy applications.

GoldFax Folder Monitor "monitors" the contents of specific folders to automatically fax qualifying files created in or written to those folders. You can create separate folders configured to send files to specific fax numbers, or to execute a customized command file.

Technology and Management

Least Cost Routing: GoldFax can automatically route outbound faxes to the phone line that will give the lowest cost transmission. For Wide Area Networks or Virtual Private Networks, this can include routing to alternate GoldFax servers to eliminate telephone charges.

Load Balancing: The load balancing capabilities of GoldFax allow the network faxing workload to be automatically shared by multiple servers on a network with no user intervention.

Management Reporting: GoldFax administration is done via GoldFax Manager Utility or via Microsoft Management Console (MMC). Users and groups can be maintained through this interface. GoldFax captures complete data on all fax transmissions, so that data can be user-customized into reports and graphs. Users can also be notified on the status of fax transmissions by email.

MMC Snap-in: If the GoldFax server is installed on a server that has MMC installed, the GoldFax MMC snap-in is automatically installed, and GoldFax management can be done through MMC.

Technical Specifications

GoldFax Server:

- Intel Pentium-class processor; 25 MB of available disk space
- Minimum 256 MB RAM
- CD-ROM Drive
- Server OS: Microsoft Windows NT 4.0/2000/2003 Server OR
- Workstation OS: Microsoft Windows 2000 Pro/XP Pro
- One or more of the following: TCP/IP, NetBUI, IPX/SPX
- Microsoft IIS for GoldFax Web Browser Interface

GoldFax Client:

- Intel Pentium-class processor with 128 MB of memory
- Microsoft Windows 98/NT 4.0/2000/XP
- One or more of the following: TCP/IP, NetBUI, IPX/SPX
- File and Print connection to GoldFax Server

For GoldFax Exchange Connector:

- Microsoft Exchange Server version 5.5/2000/2003

For SMTP Gateway:

- Compatible POP3/SMTP email server

GoldFax Exchange and POP3/SMTP Gateway Clients:

- GoldFax uses your existing email client with no additional client software needed

GoldFax Web Browser Interface:

- Microsoft IE 4.0 or higher, Netscape Navigator 4.0 or higher

Modems Supported:

- Multi-Tech MT2834ZDXb
- Multi-Tech MT5600ZDX
- Multi-Tech MT5634 MU
- Multi-Tech MT5634ZBA-USB

Fax Cards Supported:

- Brooktrout TR114
- Brooktrout TR1034
- Brooktrout TruFax 100/200
- Comtrol Rocket Modem II
- Digi AccelePort RAS

Serial Boards Supported:

- Digi AccelePort
- Comtrol RocketPort

For More Information

DPD International has been developing office and network software for nearly 30 years. Our high-performance applications have been deployed and successfully used by thousands of companies and government agencies around the world with over 400,000 end-users.

DPD International is committed to providing best-of-breed software products that are easy-to-use, and we are committed to servicing our customers' needs at every turn. To find out how we can help you, please contact us:

Web: <http://www.goldfax.com>
 Email: sales@dpd.com
 Phone: +1 714-695-1000 N. America
 +44 1628 858000 Europe

Offices and resellers in major cities worldwide.